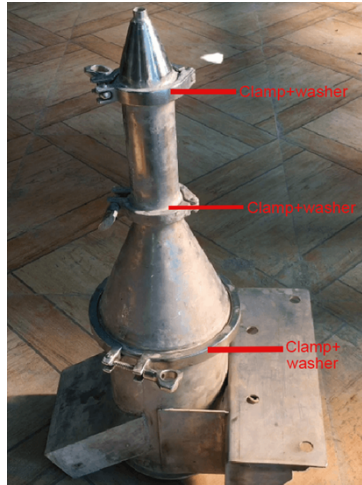
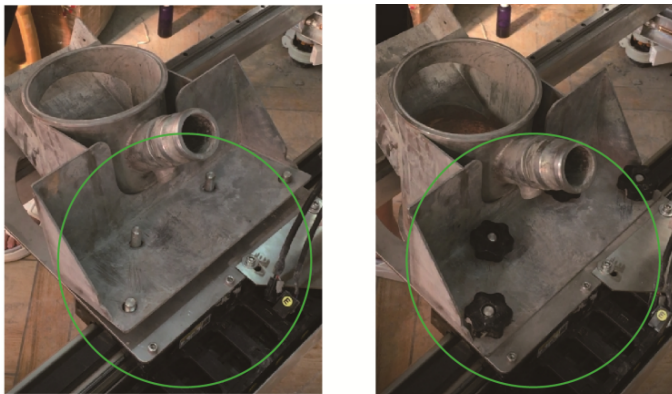


## ZCC 1215H Installation

1. Assemble the barrel part of the extruder. Place a washer at each connection point and secure it with a clamp. (Figure P-1) Clamp + Washer

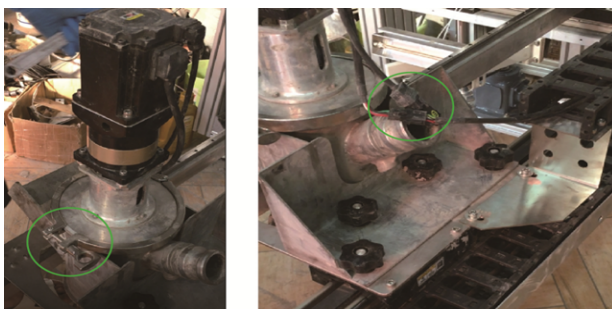


2. After assembly, place it on the mounting plate of the machine extruder, align the slots, and tighten the nuts for fixation. (Figure P-2)



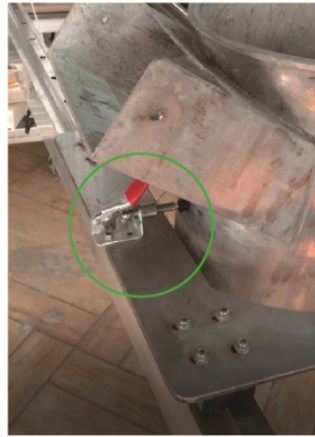
(P-2)

3. Install the (motor + screw) part of the extruder, place a washer at the joint, and use a clamp to lock the upper and lower parts together. Connect the two motor wires on the motor to the wires in the drag chain. (Figure P-3)



(P-3)

4. Fasten the quick clamp in front of the extruder mounting plate to fix the material barrel. (Figure P-4)



(P-4)